

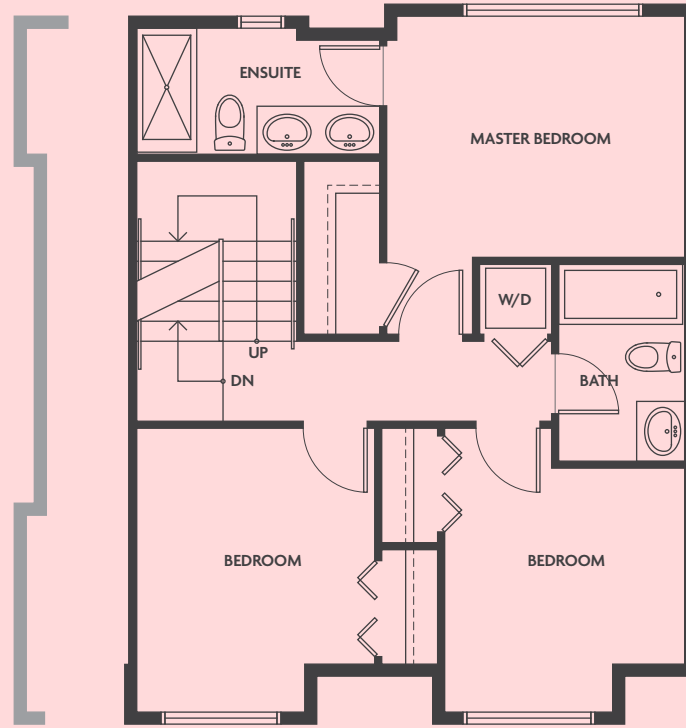
F

3 BED + DEN + 2.5 BATH
1,542-1,579 SQFT + ROOF DECK 430 SQFT

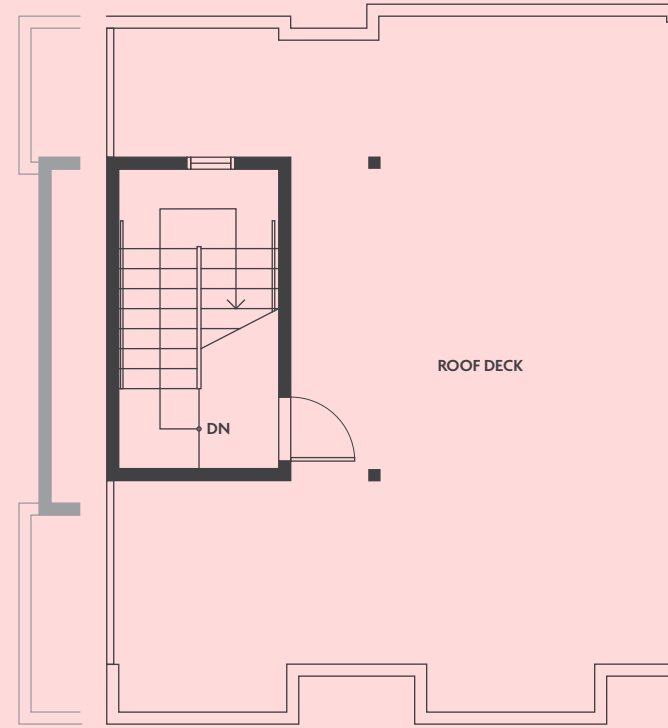
F1

MODERN ROOFTOP HOMES

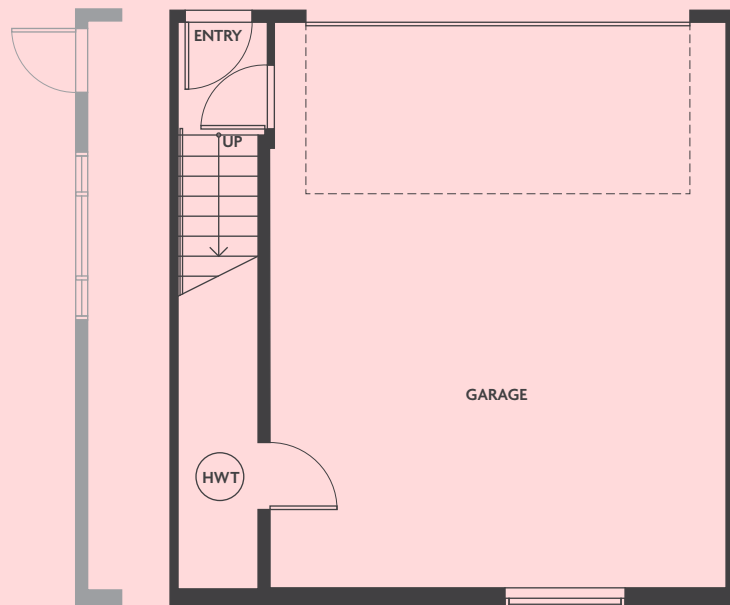
BERKELEY
VILLAGE



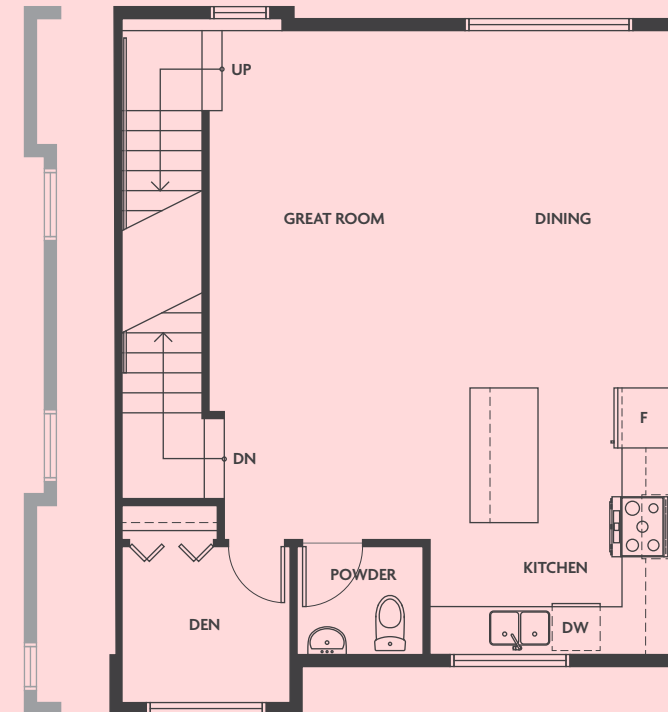
UPPER



ROOF



LOWER



MAIN

THE DEVELOPER RESERVES THE RIGHT TO MAKE MODIFICATIONS AND CHANGES TO THE BUILDING DESIGN, ELEVATIONS, DIMENSIONS, SPECIFICATIONS, FEATURES AND PRICES WITHOUT PRIOR NOTIFICATION. DECKS, PATIOS, STAIRS AND WINDOWS MAY VARY BASED ON SITE CONDITIONS. ALL SIZES AND DIMENSIONS ARE APPROXIMATE AND BASED ON ARCHITECTURAL MEASUREMENTS. REVERSE AND/OR MIRROR PLANS OCCUR THROUGHOUT THE DEVELOPMENT. PLEASE SEE DISCLOSURE STATEMENT FOR SPECIFIC OFFERING ONCE AVAILABLE & O.E.